

## Celotex GA4000

### Introduction

Celotex GA4000 is a general purpose insulation board for floors, walls and roofs. It has long been at the heart of the Celotex product range providing the user with a range of thermal insulation solutions.

With low emissivity foil facings, GA4000 is manufactured from rigid polyisocyanurate (PIR) using a blend of blowing agents that have zero ozone depletion potential (zero ODP) and low global warming potential (GWP).

With Celotex GA4000 you are specifying an insulation board that:

- Is suitable for use in a number of applications including roof, wall and floor systems
- Comes in thicknesses ranging from 50mm-100mm
- Is easy to cut and shape
- Includes low emissivity foil facings giving improved thermal insulation performance within cavity air spaces
- Provides reliable long-term energy savings for buildings
- Is available in a standard board size of 1200mm x 2400mm

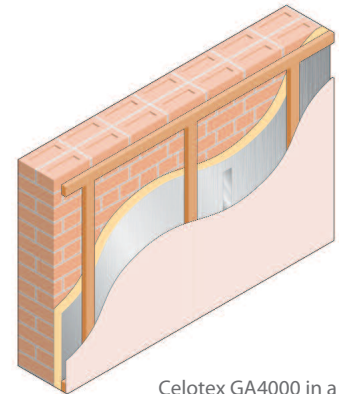
### Applications

Celotex GA4000 can be specified for use in a variety of applications including:

- Pitched Roofs
- Flat Roofs
- Solid Masonry Walls
- Timber Framed & Steel Framed systems
- Floors

### Specification Clause

The insulation shall be Celotex GA4000 \_\_\_\_\_mm thick comprising a polyisocyanurate rigid foam insulation core, with a thermal conductivity of 0.022W/mK and low emissivity aluminium foil facings on both sides. GA4000 is A+ rated when compared to the BRE Green Guide 2008 and is CFC/HCFC free with zero ODP and low GWP. CE marking compliance to BS EN 13165:2001 and manufactured in accordance with quality management systems BS EN ISO 9001:2000 by Celotex Limited. All products must be installed in accordance with instructions issued by Celotex Limited.



Celotex GA4000 in a masonry wall application

### Sustainable Insulation

Celotex PIR insulation has been independently assessed by BRE Global and has been accredited with an A+ rating when compared to the BRE Green Guide 2008.

The results also show that Celotex offers a lower environmental impact than other typical PIR manufacturers.

For further information about Celotex' sustainable insulation solutions, visit the sustainability pages of the website at [celotex.co.uk](http://celotex.co.uk)



Cont...

## Celotex GA4000 Technical Data

Product Code	Thickness (mm)	R-value (m <sup>2</sup> K/W)	Weight (kg/m <sup>2</sup> )
GA4050	50	2.25	1.55
GA4055	55	2.50	1.70
GA4060	60	2.70	1.88
GA4065	65	2.95	2.03
GA4070	70	3.15	2.17
GA4075	75	3.40	2.32
GA4080	80	3.60	2.46
GA4090	90	4.05	2.74
GA4100	100	4.50	3.28

## Physical Properties

	Method	GA4000
<b>Compressive strength</b>	BS EN 826	≥120kPa
<b>Dimensional stability</b>	BS EN 1604	DS(TH)8
<b>Water vapour resistance</b>	BS EN 12086: Method B	>150 MNs/g
<b>Thermal conductivity</b>	BS EN 12667	0.022 W/mK
<b>Surface spread of flame</b>	BS 476-7	Class 1 (50mm - 90mm only)

## Typical U-values

U-values will vary depending on application. To calculate a specific U-value, please refer to our online U-value calculator at [celotex.co.uk](http://celotex.co.uk)

## Installation Guidelines

Installation of Celotex GA4000 will depend on application type. For full details of the installation of Celotex GA4000, please refer to the 'application' pages of the website at [celotex.co.uk](http://celotex.co.uk) and select the application of interest.

## Further Information

If you wish to contact Celotex, please visit [celotex.co.uk](http://celotex.co.uk) and click on the 'contact us' page.

For information regarding storage and handling of Celotex products, or for Health & Safety advice, please refer to the 'literature' pages of the website at [celotex.co.uk](http://celotex.co.uk)

Celotex has a policy of continuous product development and reserves the right to alter product designs or specifications without prior notice.

\*Calls to the Celotex Technical Centre are charged at 30p per minute from a BT landline and lines are open Monday - Friday from 8.00am - 5.15pm. Details and pricing are correct at date of publication - June 2010.

**Celotex Limited**  
 Lady Lane Industrial Estate,  
 Hadleigh, Ipswich  
 Suffolk IP7 6BA

**T:** 0901 996 0100\*  
**W:** [celotex.co.uk](http://celotex.co.uk)

Registered Office:  
 Lady Lane Industrial Estate  
 Hadleigh, Ipswich, Suffolk IP7 6BA  
 Registered in England No 2183896